



**VIEWS OF  
BLACKCOMB  
MOUNTAIN**

4  
BEDROOMS

3,498 SQ.FT.  
RESIDENCE

4.5  
BATHROOMS

13,131 SQ.FT.  
LOT

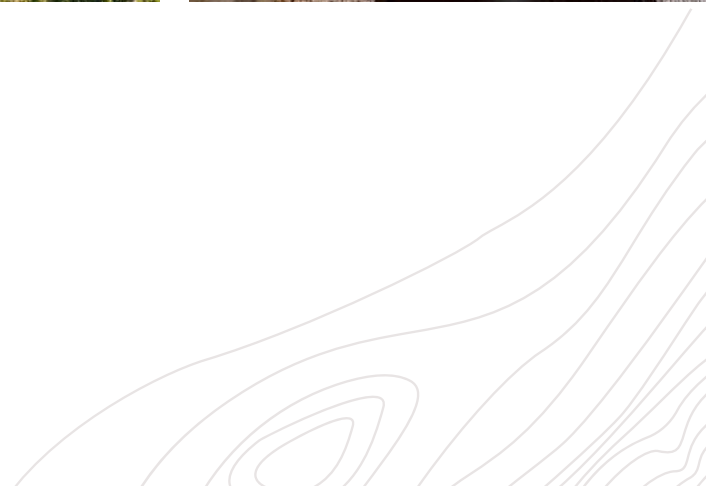


# MODERN WHISTLER CHALET



Tucked at the end of a quiet cul-de-sac in Whistler's coveted Blueberry neighbourhood, this timeless post-and-beam chalet offers warmth, privacy, and breathtaking views of Blackcomb Mountain. Thoughtfully designed for mountain living, the two-story layout features 4 generous bedrooms, 4.5 bathrooms, vaulted ceilings, and expansive windows that flood the home with natural light. Seamless indoor-outdoor living makes entertaining a dream, while a private hot tub offers everyday escape. Extensive upgrades, including a new roof, elevate this retreat's lasting comfort and style. Phase I zoning provides nightly rental flexibility.









SEAMLESS INDOOR AND OUTDOOR  
LIVING SPACES

PRIVATE HOT TUB

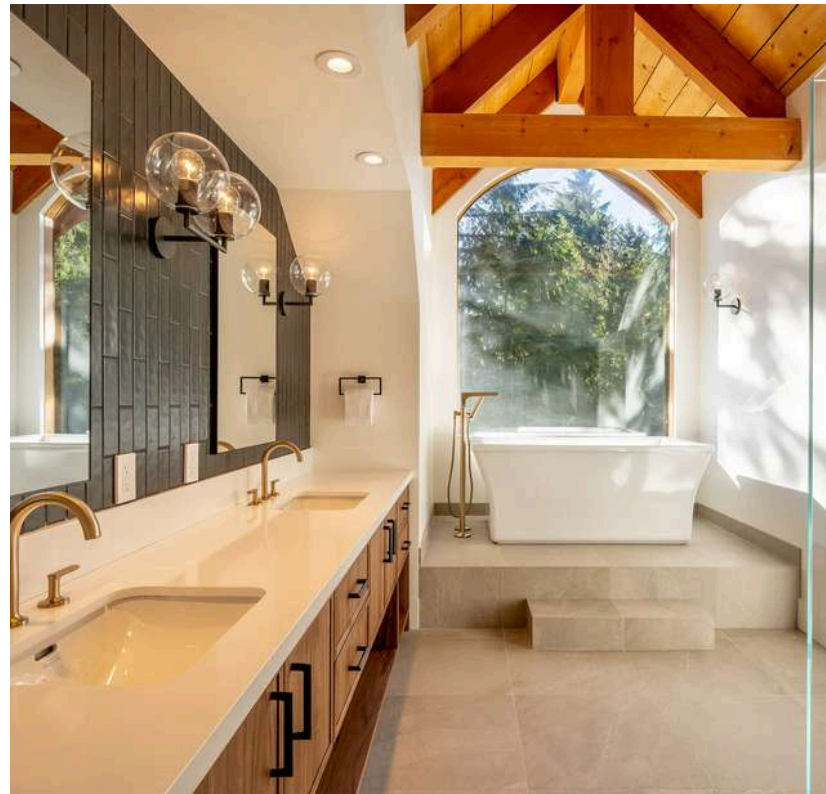


INCREDIBLE MOUNTAIN VIEWS  
THROUGHOUT











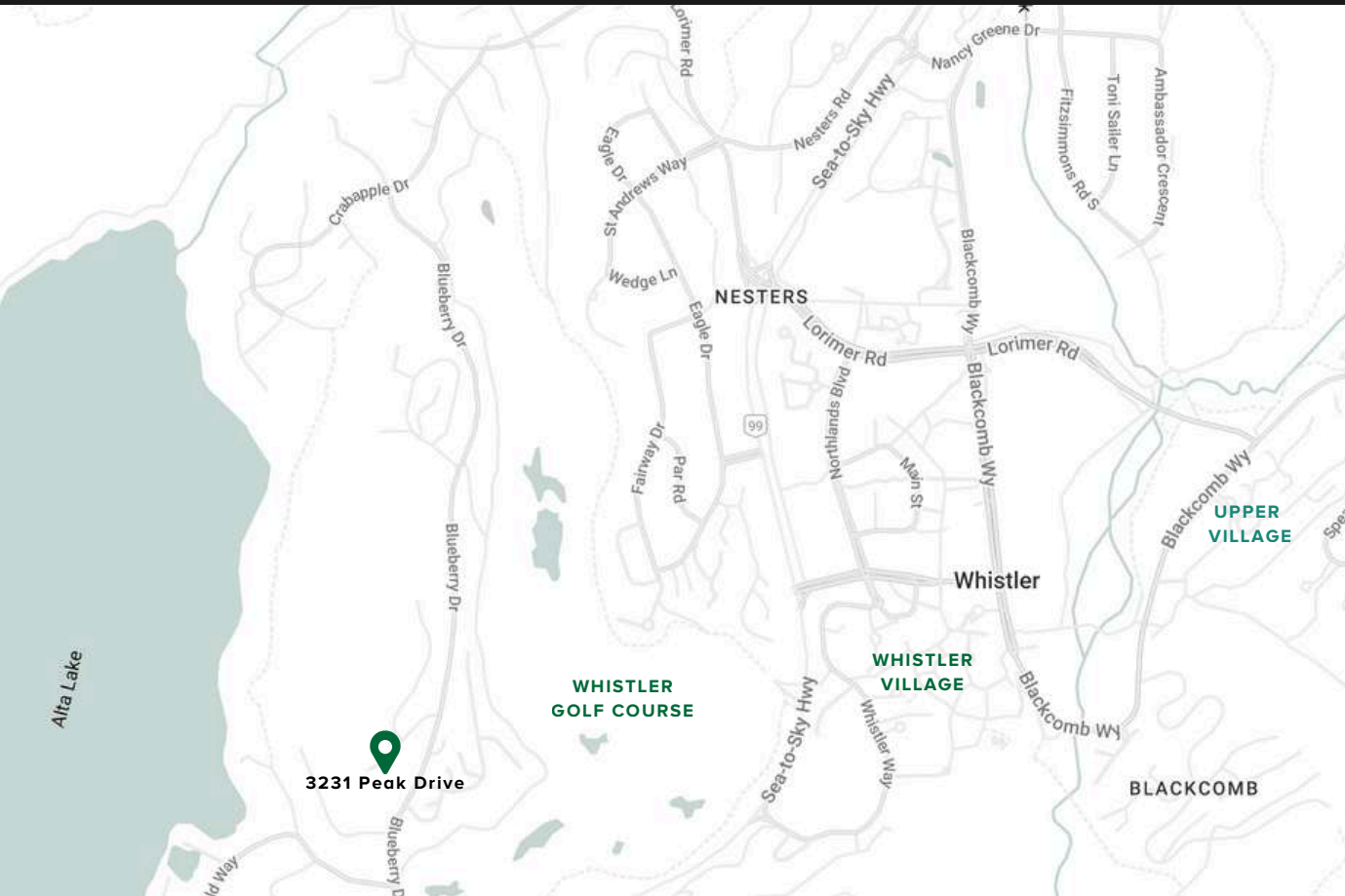








# ACCESS TO ALL



## ALTA LAKE NEARBY

Easy access to Alta Lake's Blueberry Docks and Lakeside Park.



## MOUNTAIN VIEWS

Panoramic mountain views that encircle its elevated position.



## WALK TO VILLAGE

Walking distance to Whistler Village



## BIKING & HIKING TRAILS

Quick and convenient access to a multitude of Whistler's best trail networks including Valley Trail.



# 3231 PEAK DRIVE

## MAIN FLOOR

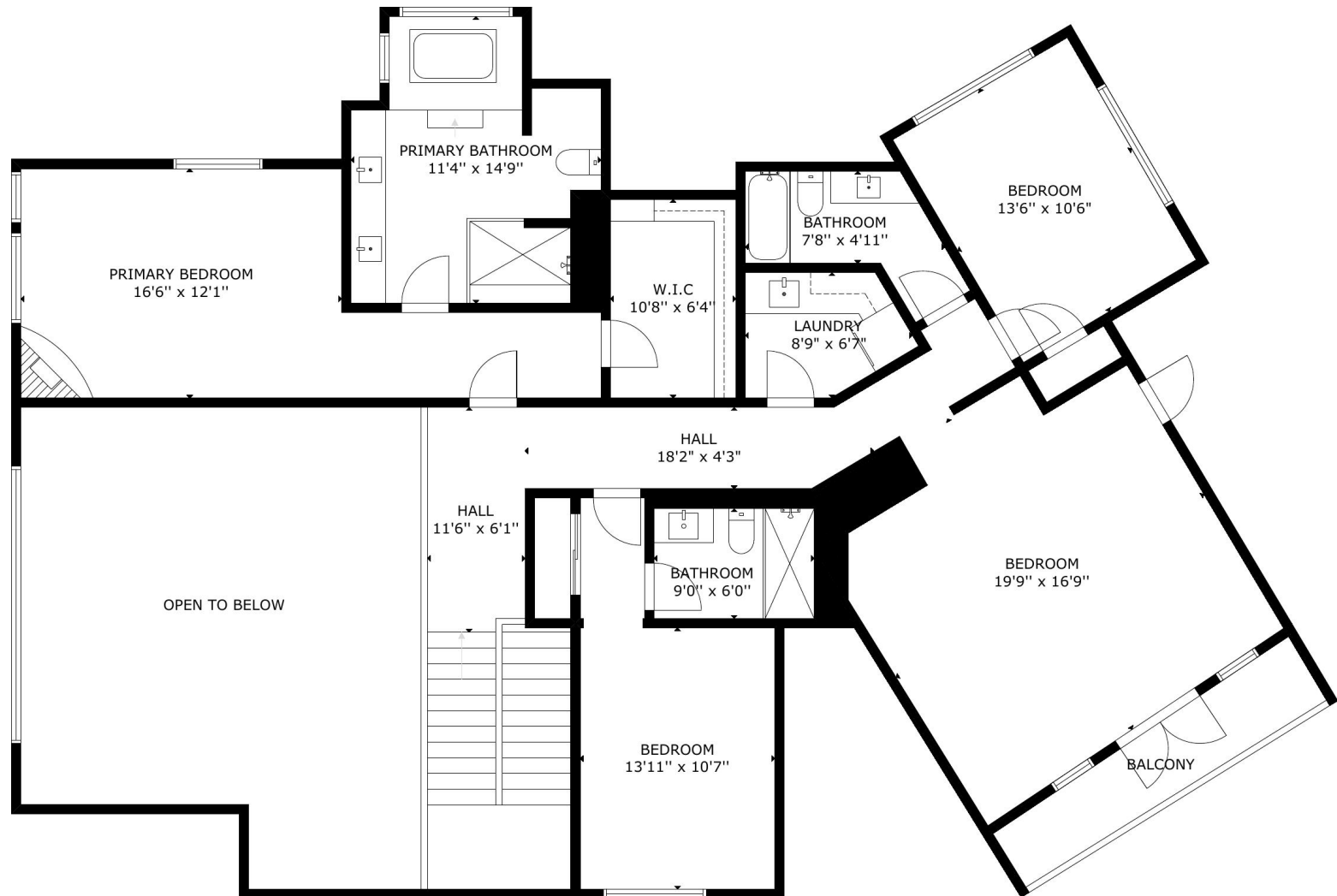


MEASUREMENT ARE APPROXIMATE, ACTUALS MAY VARY. MEASUREMENTS MAY INCLUDE NON-CONFORMING SPACE.



# 3231 PEAK DRIVE

## UPPER FLOOR



MEASUREMENT ARE APPROXIMATE, ACTUALS MAY VARY. MEASUREMENTS MAY INCLUDE NON-CONFORMING SPACE.