

1 FITZSIMMONS WALK



**MOUNTAIN
LUXURY
TOWNHOME**

4
BEDROOMS

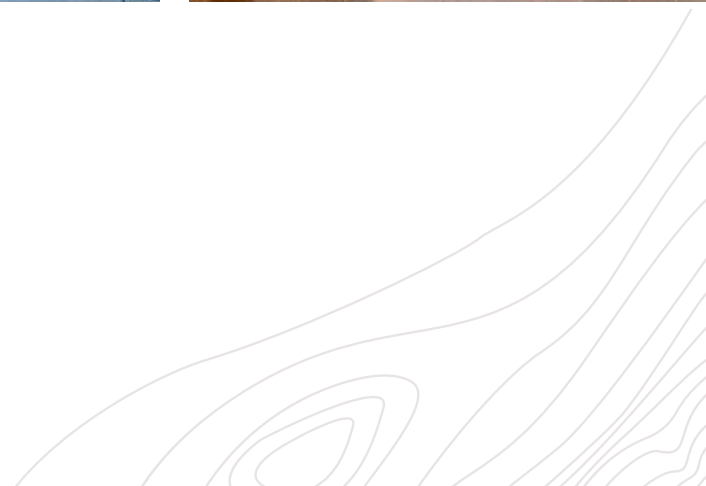
2,877 SQ.FT.
RESIDENCE

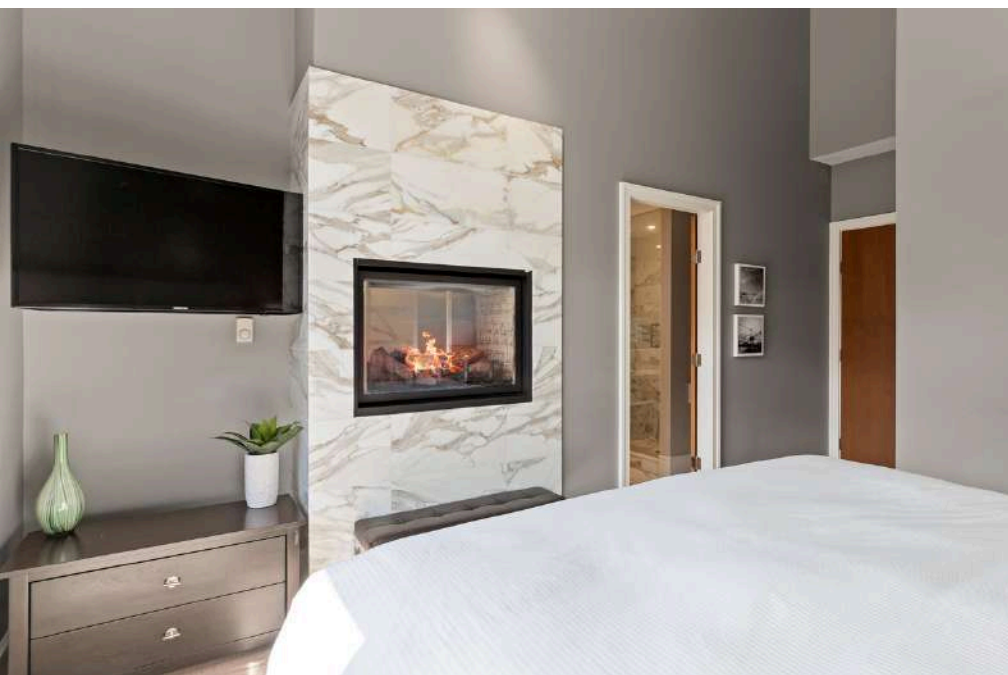
3.5
BATHROOMS

BOLD CONTEMPORARY DESIGN



Experience refined mountain living at Fitzsimmons Walk. This townhouse blends modern design with a West Coast aesthetic and offers seamless indoor-outdoor flow. Take in panoramic views of Whistler and Blackcomb Mountains, enjoy generous sun exposure, and relax in exceptional outdoor spaces featuring a built-in BBQ, outdoor fireplace, and private hot tub. Inside, the open-concept layout includes a flexible floor plan with family room, vaulted ceilings, and a dual-sided fireplace in the primary suite. Underground parking and ample storage complete the package. Phase I zoning offers flexibility with unlimited owner usage and nightly rentals permitted



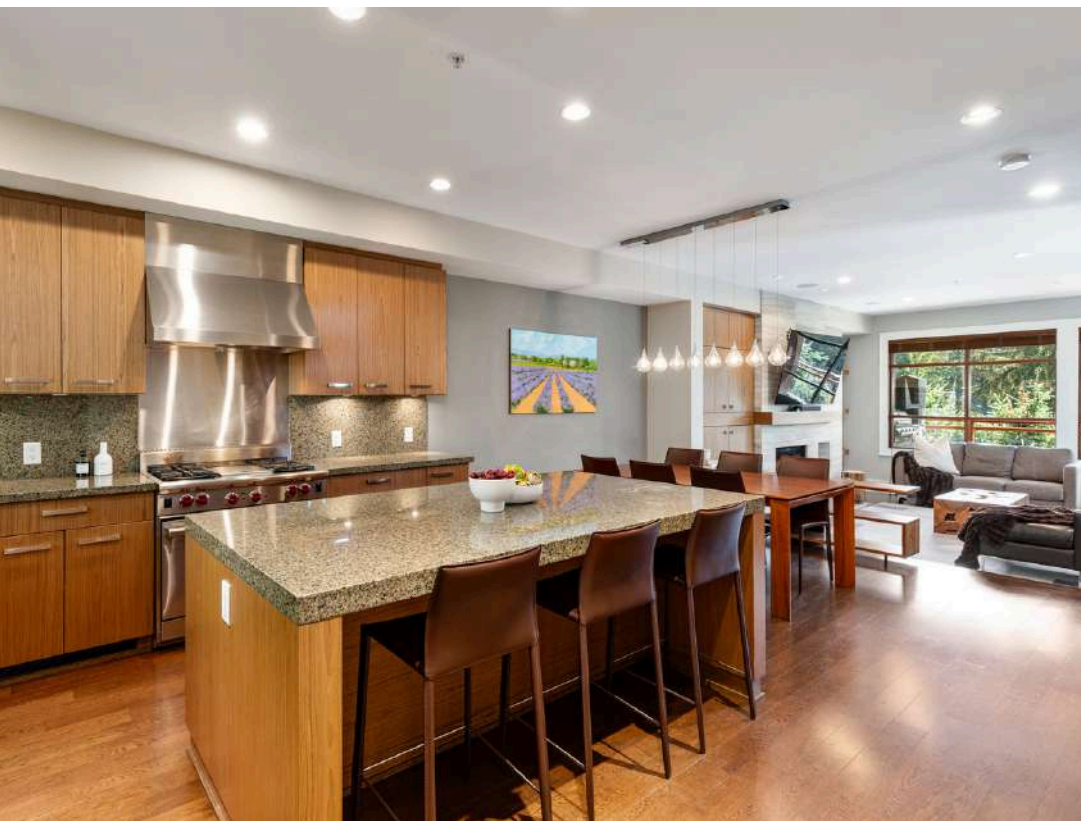


PRIMARY BEDROOM FIREPLACE

HOT TUB ON PATIO

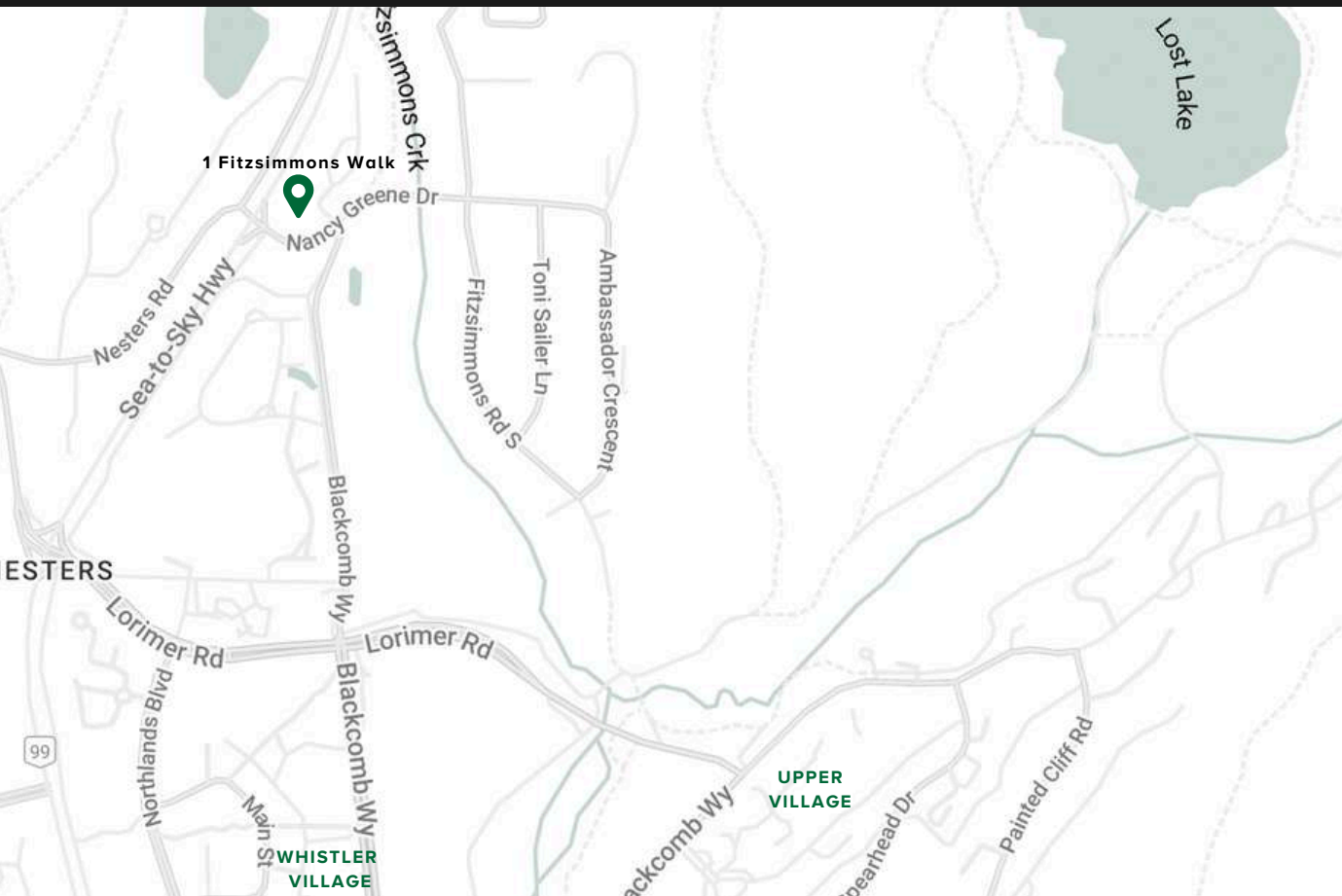


MOUNTAIN VIEWS





ACCESS TO ALL



NIGHTLY RENTALS

Flexible zoning allows for unlimited owner usage and nightly rentals.



MOUNTAIN VIEWS

Positioned to maximize mountain views.



WALK TO VILLAGE

Located an 5-10 minute stroll from Whistler Village.

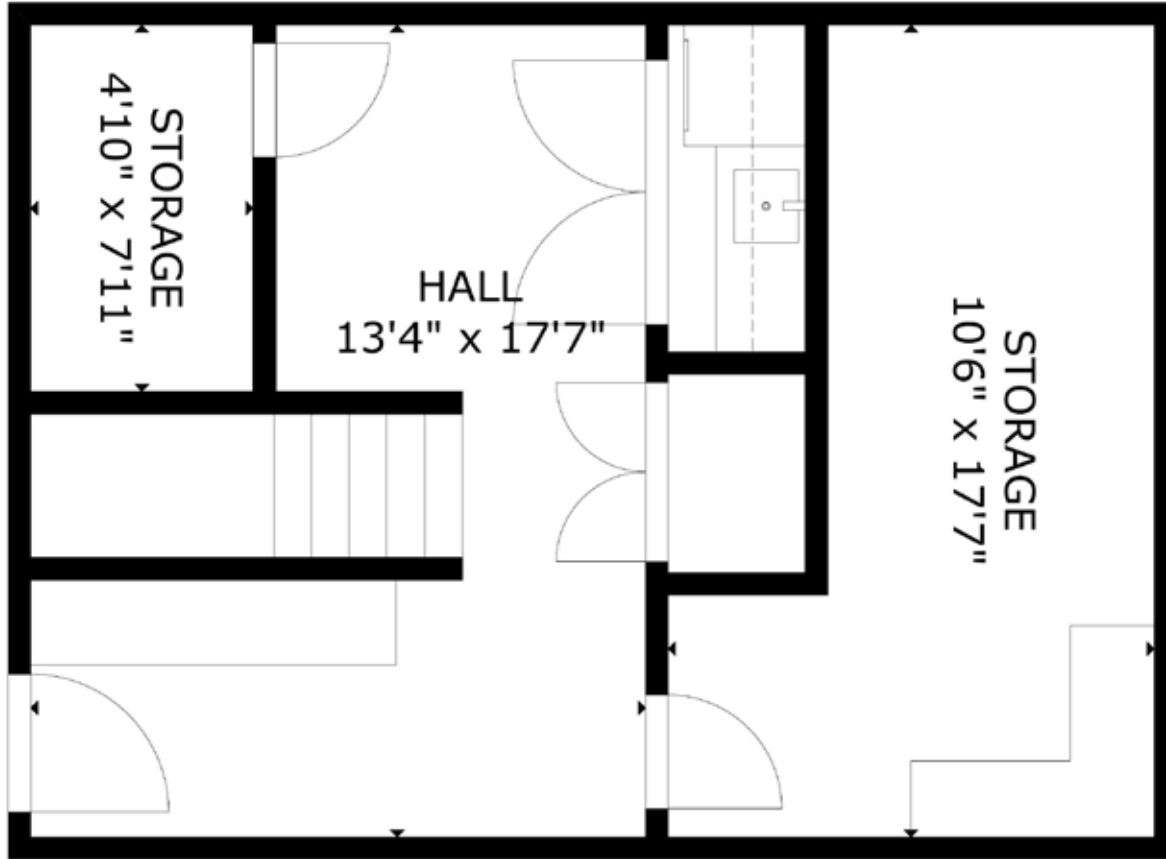


BIKING & HIKING TRAILS

Quick and convenient access to a multitude of Whistler's best trail networks including Valley Trail.

1 FITZSIMMONS WALK

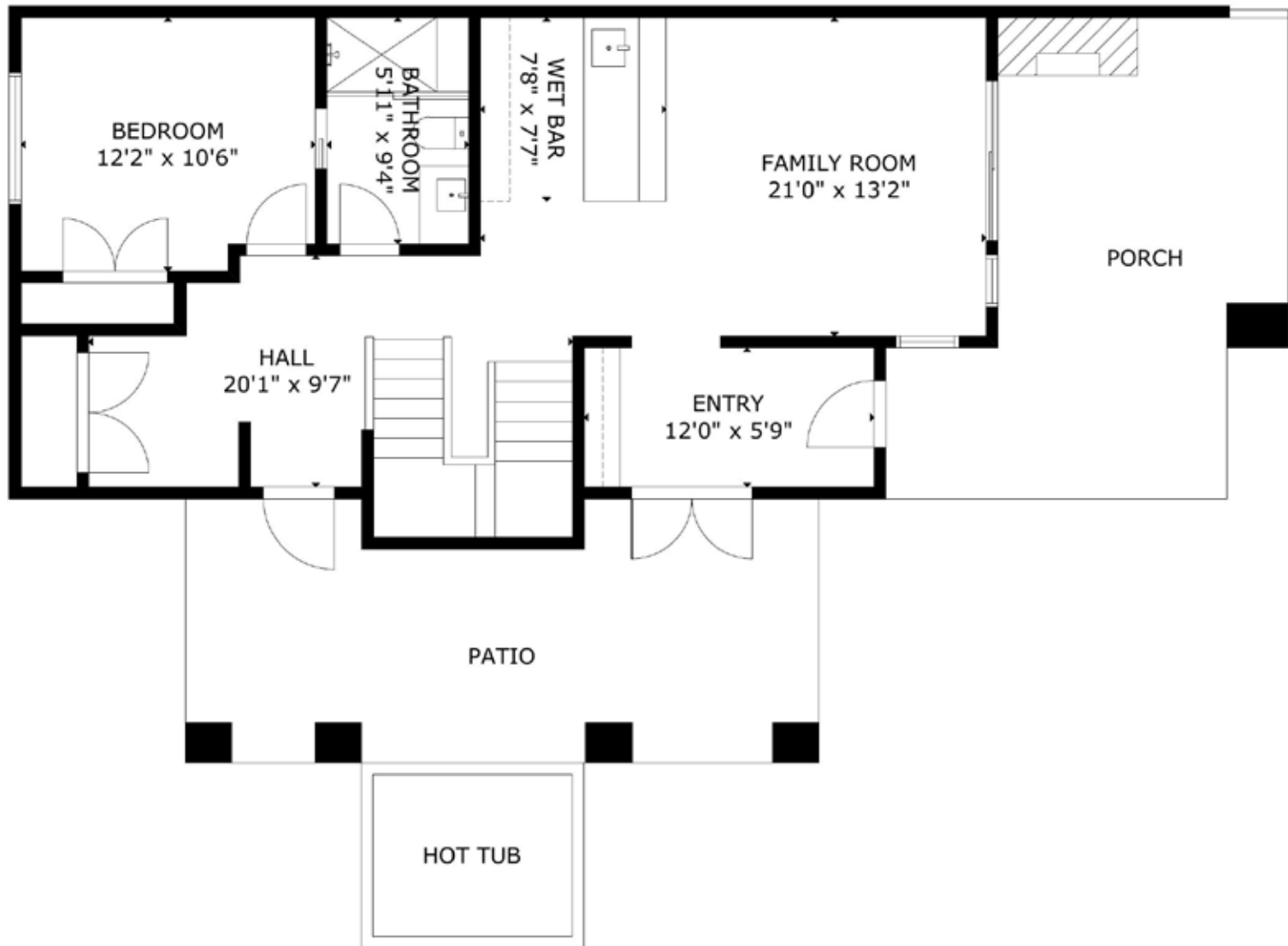
LOWER FLOOR



MEASUREMENT ARE APPROXIMATE, ACTUALS MAY VARY. MEASUREMENTS MAY INCLUDE NON-CONFORMING SPACE.

1 FITZSIMMONS WALK

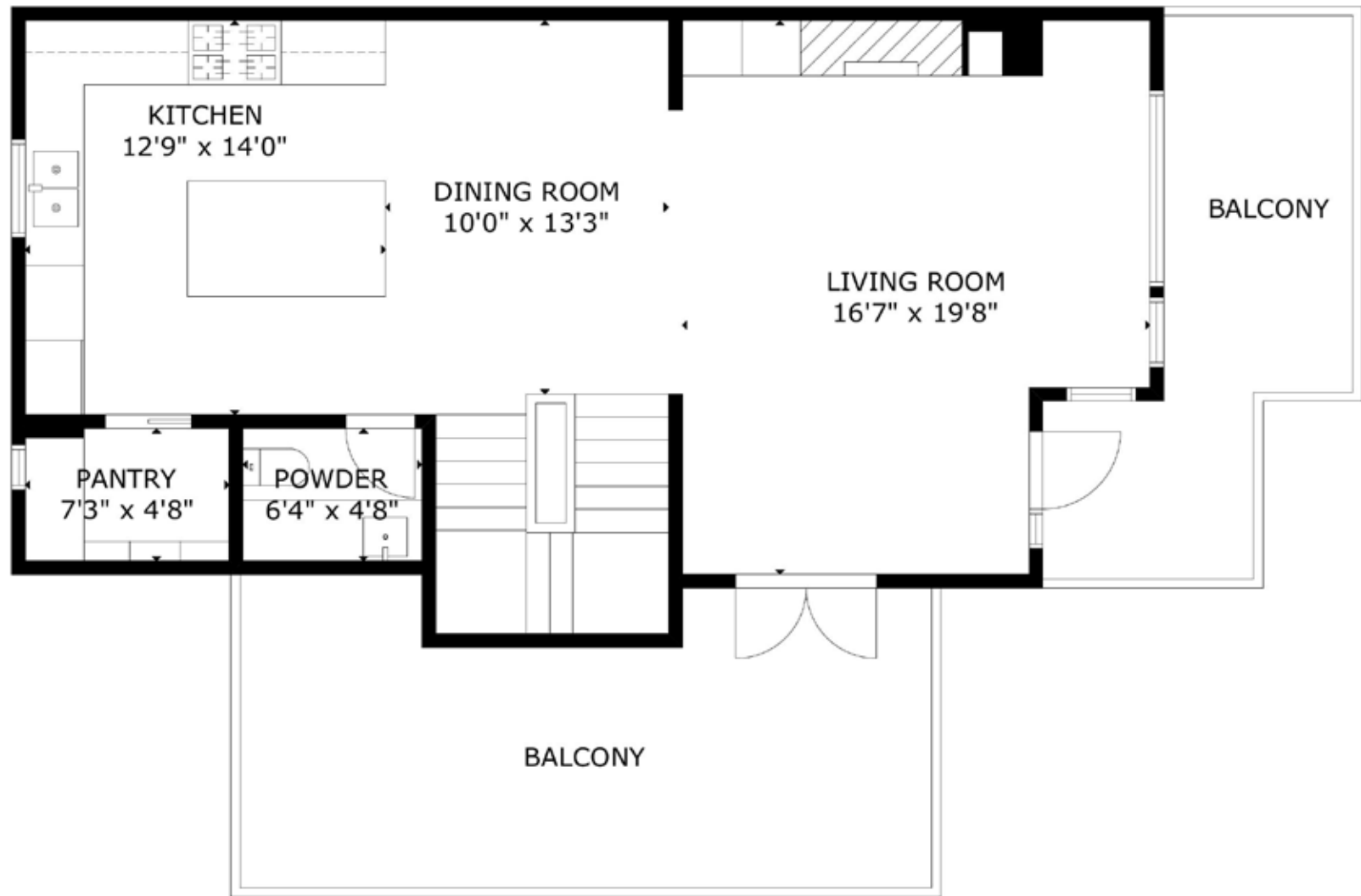
ENTRY FLOOR



MEASUREMENT ARE APPROXIMATE, ACTUALS MAY VARY. MEASUREMENTS MAY INCLUDE NON-CONFORMING SPACE.

1 FITZSIMMONS WALK

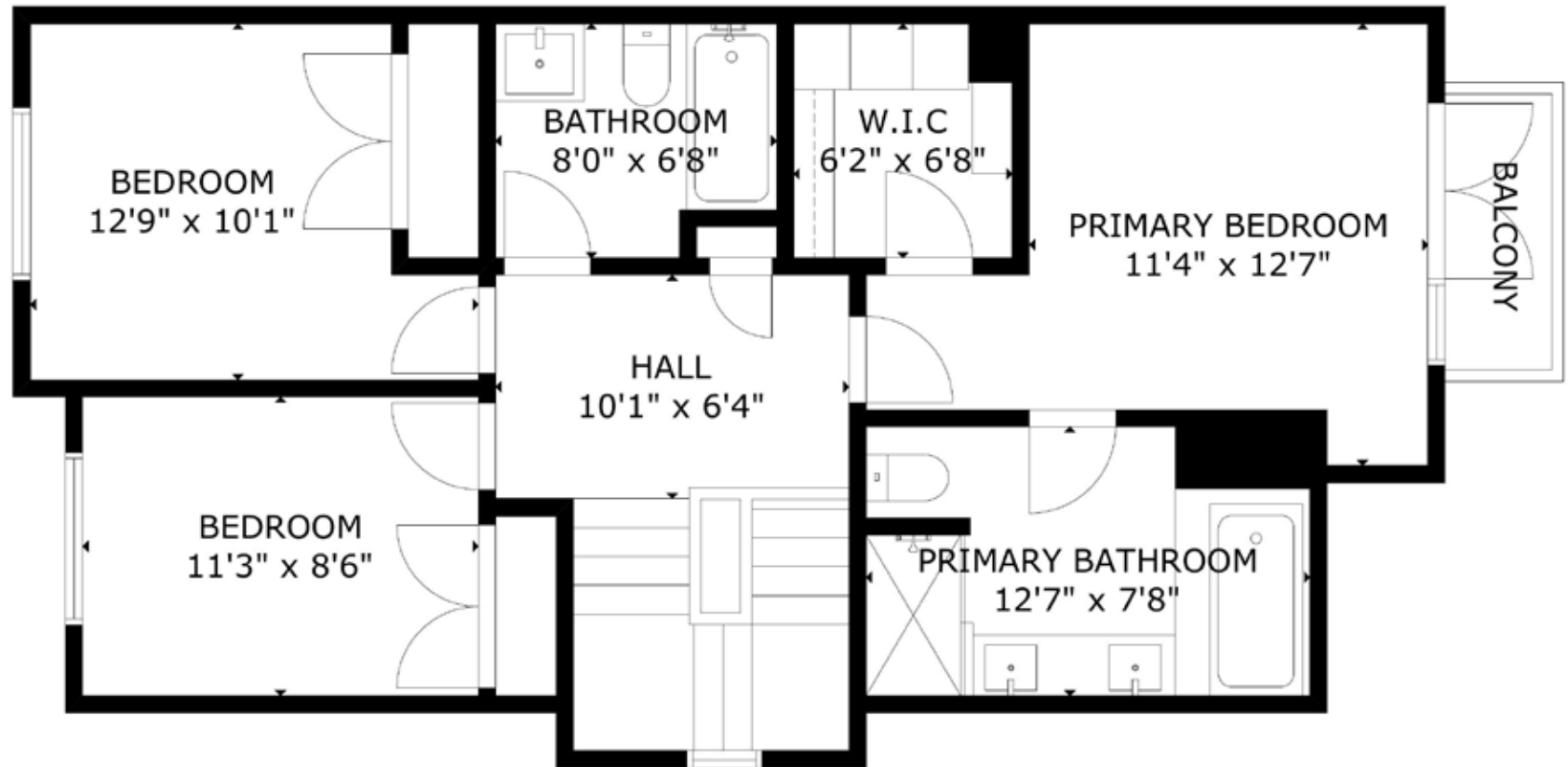
MAIN FLOOR



MEASUREMENT ARE APPROXIMATE, ACTUALS MAY VARY. MEASUREMENTS MAY INCLUDE NON-CONFORMING SPACE.

1 FITZSIMMONS WALK

UPPER FLOOR



MEASUREMENT ARE APPROXIMATE, ACTUALS MAY VARY. MEASUREMENTS MAY INCLUDE NON-CONFORMING SPACE.