

501 WOODRUN



**NIGHTLY
RENTALS
ALLOWED**

3
BEDROOMS

1,410 SQ.FT.
RESIDENCE

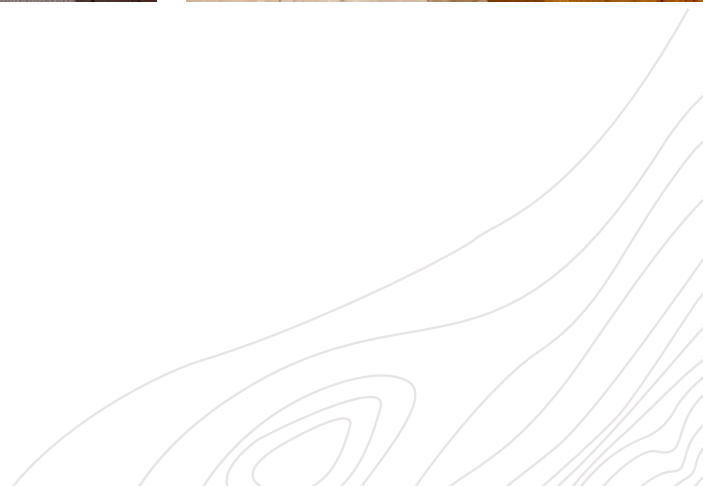
2
BATHROOMS

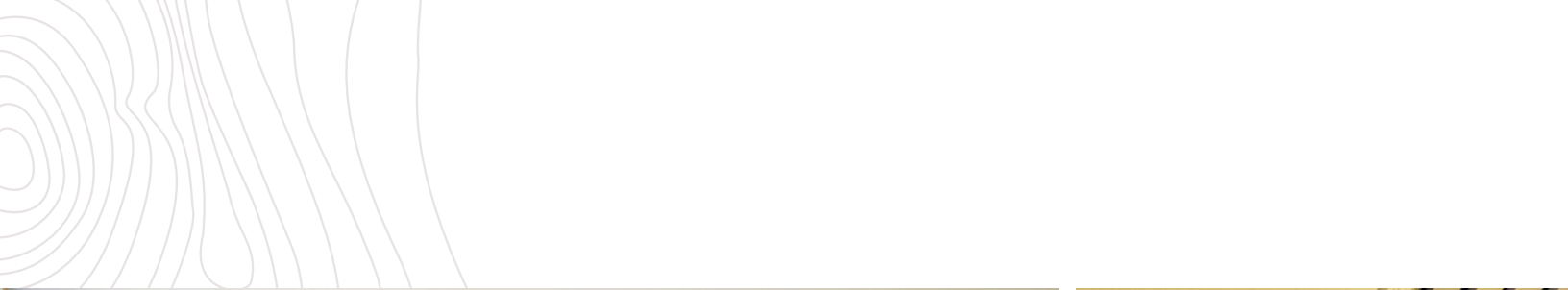
SKI-IN/SKI-OUT ACCESS

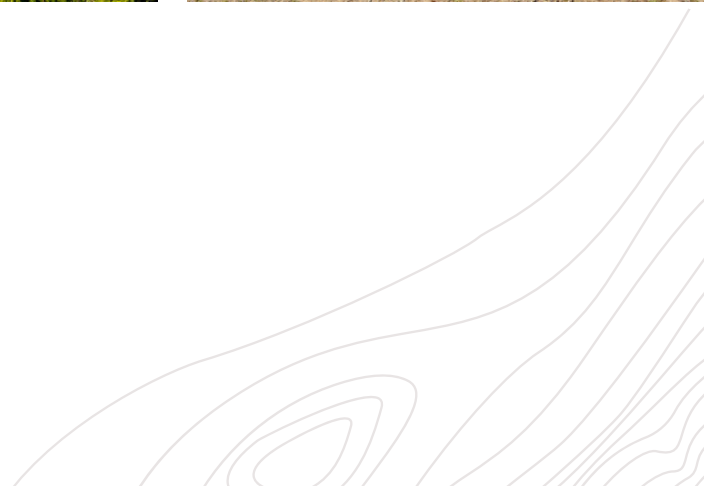


The mountains are calling from this three-bedroom corner suite overlooking with prime click-in/click-out ski access! Known for its quality concrete construction, Woodrun Lodge is perfectly positioned in the upper village, offering year-round revenue potential. Entertain with ease in the spacious floor plan and enjoy the luxury comforts of home with a chef's kitchen, double sided gas fireplace, two private decks and in-suite laundry. Take advantage of the slope-side outdoor swimming pool, hot tub, fitness facility, or enjoy having walking access to Whistler's world class fine dining, shopping and events. Phase I zoning allows for unlimited owner usage and nightly rentals.

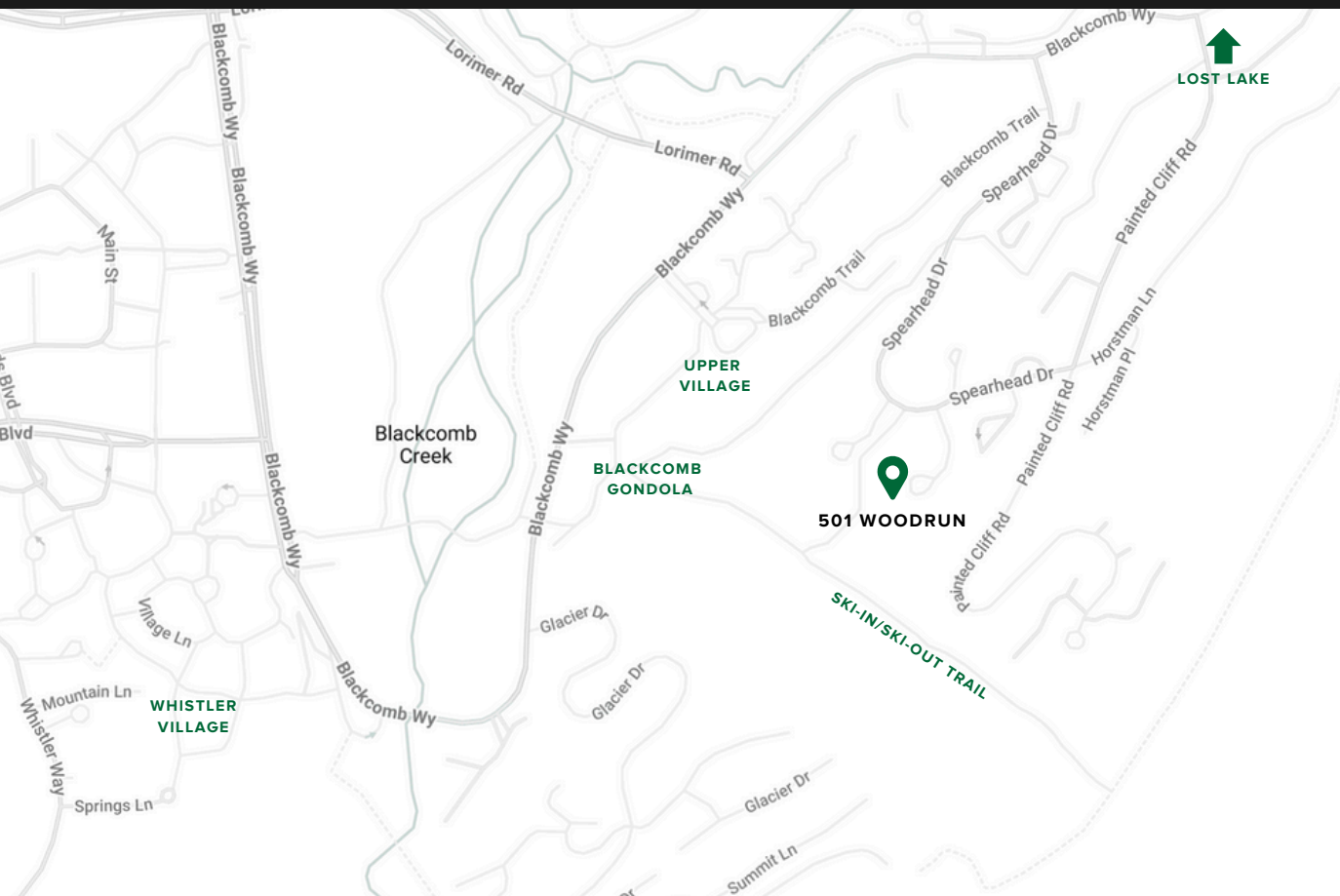








ACCESS TO ALL



LAKES NEARBY

Walk or catch the bus to
Lost Lake park.



BIKING TRAILS

Quick and convenient
access to a multitude of
Whistler's best trails.



WALKING DISTANCE

Few minutes walk to
restaurants and shops of
Upper Village / Blackcomb
Base, including the Fairmont
Chateau Golf Course.

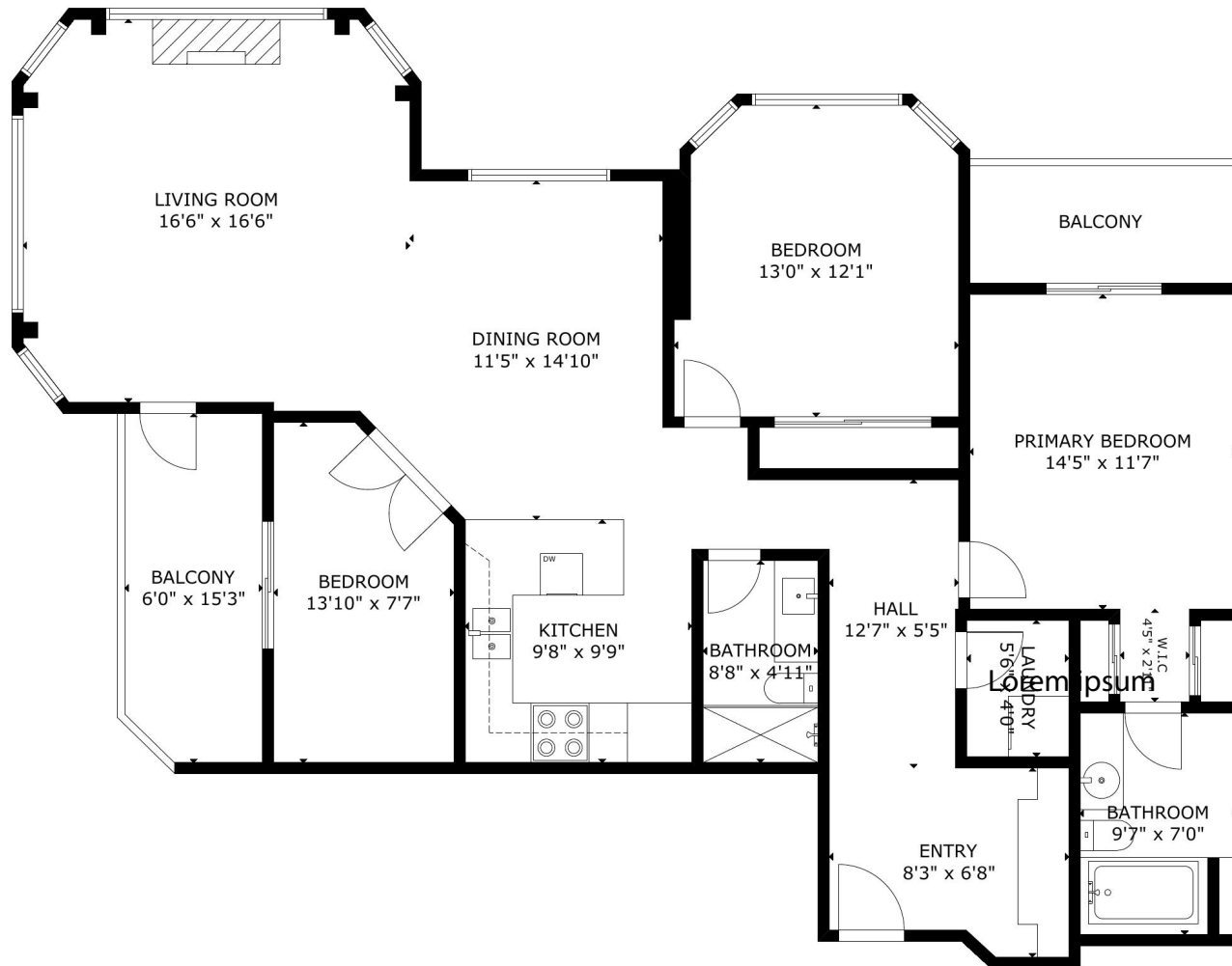


CLICK-IN/CLICK-OUT ACCESS

Direct ski access to
Blackcomb Mountain and
Blackcomb Gondola from
your doorstep.

501 WOODRUN

4910 SPEARHEAD PLACE



MEASUREMENT ARE APPROXIMATE, ACTUALS MAY VARY. MEASUREMENTS MAY INCLUDE NON-CONFORMING SPACE.