



**BENCHLANDS
TOWNHOUSE**

3
BEDROOMS

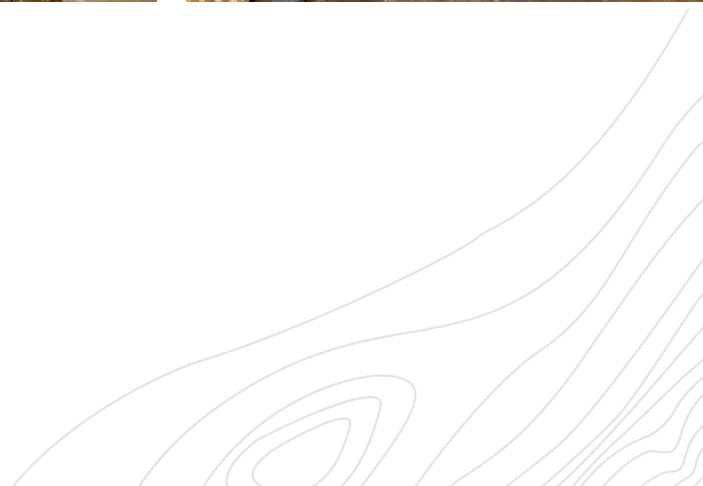
1,829 SQ.FT.
RESIDENCE

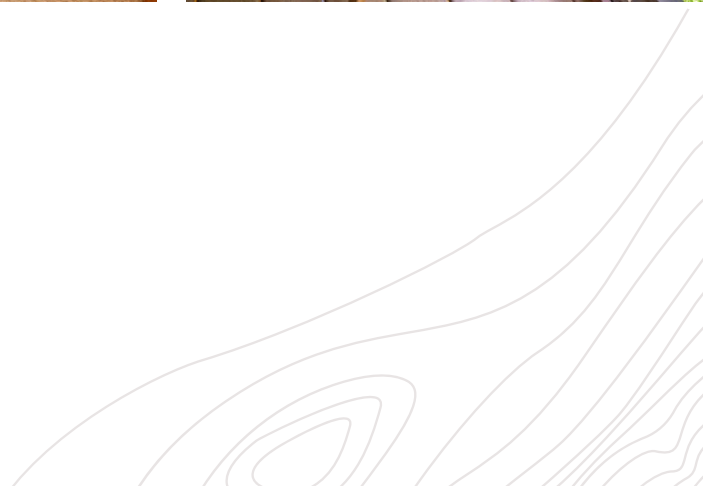
3
BATHROOMS

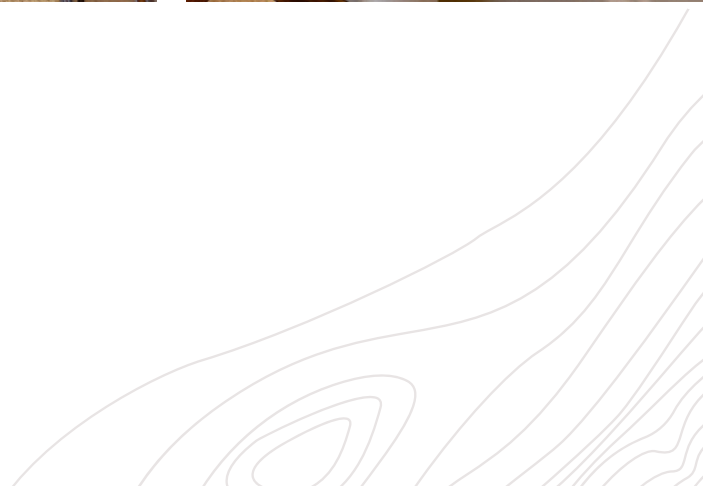
SPACIOUS OPEN PLAN LIVING

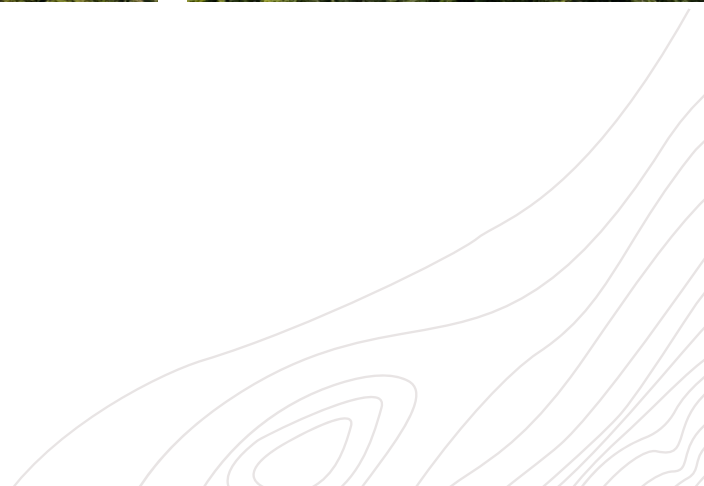
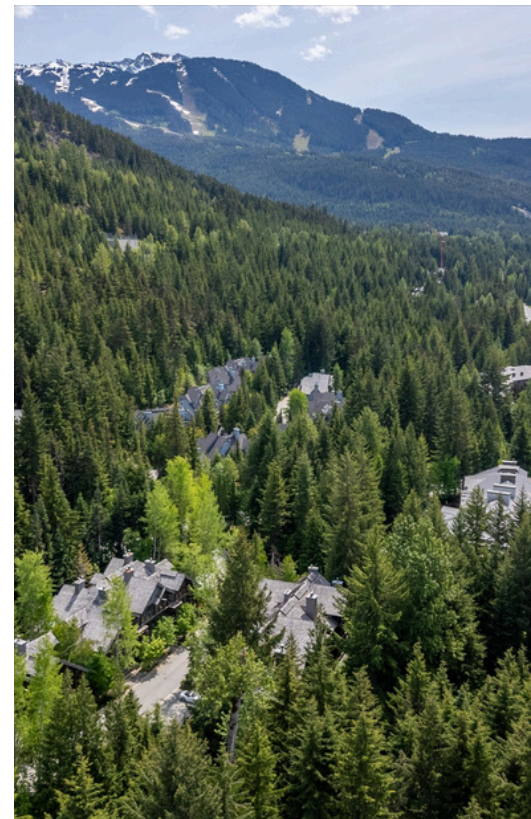


Take advantage of all Whistler's year-round pursuits from this perfectly positioned ski-home residence, offering convenient access to Lost Lake's extensive XC skiing, biking, and hiking trail network—while also being just steps from the Chateau Golf Course. An open floor plan welcomes natural light throughout, with a large window wall bordering the living area and sliding doors that lead to a covered patio, where you can enjoy the rhythmic sounds of the creek and a private, treed outlook. The functional layout includes three well-proportioned bedrooms, a cozy fireplace, and a covered hot tub deck to relax in after a day on the mountain. Zoned for nightly rentals with unlimited owner use, this low-maintenance mountain retreat offers excellent revenue potential along with a private single-car garage. No GST.

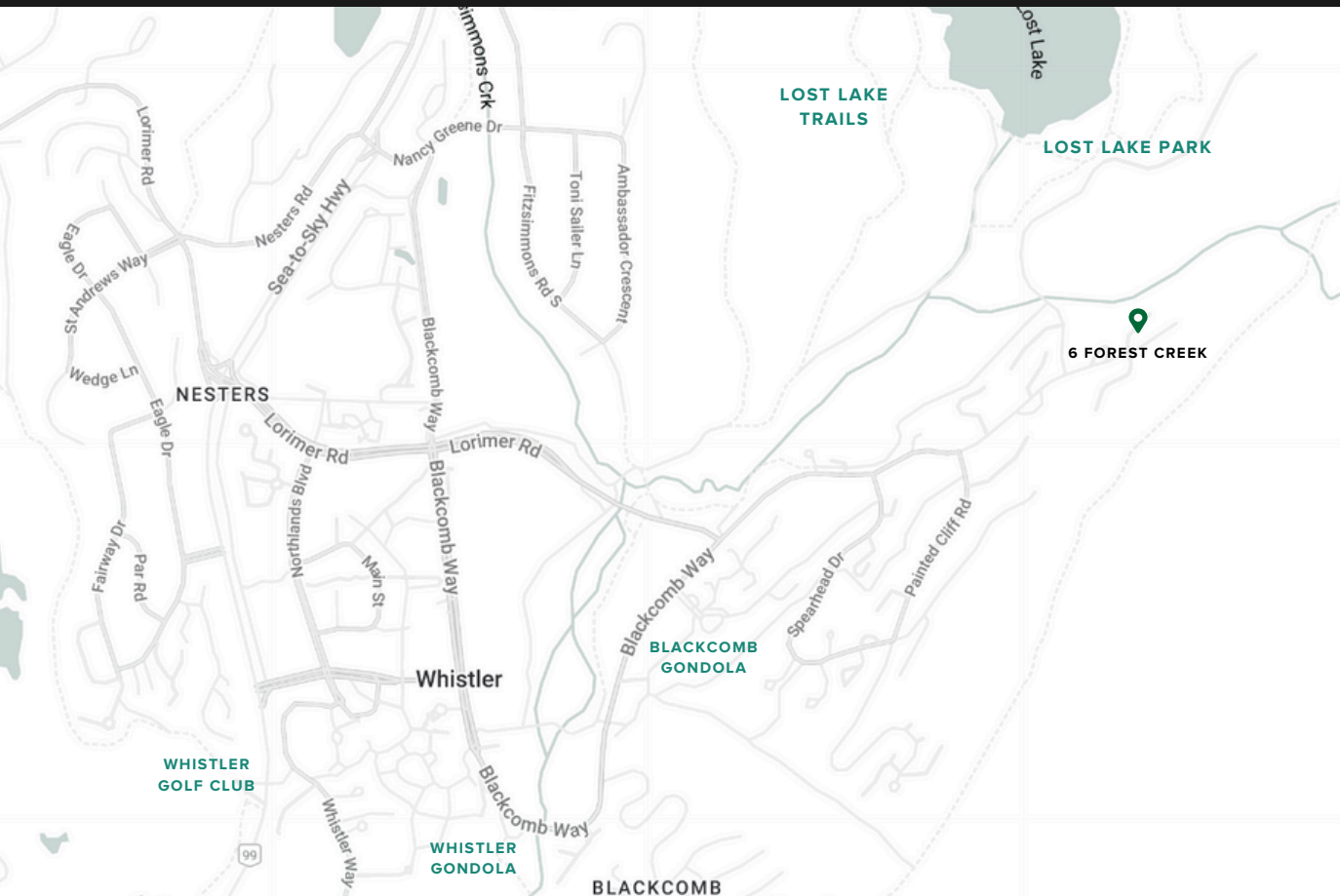








ACCESS TO ALL



OWNER USAGE

Phase I zoning allowing unlimited owner usage as well as the ability to rent nightly.



CLOSE TO VILLAGE

Easy access to Whistler Village by the free shuttle bus or short walk via Whistler's Valley Trail network.



BIKING & HIKING TRAILS

Quick and convenient access to a multitude of Whistler's best trail networks including Valley Trail and Lost Lake's extensive hiking, biking and cross country trail network.

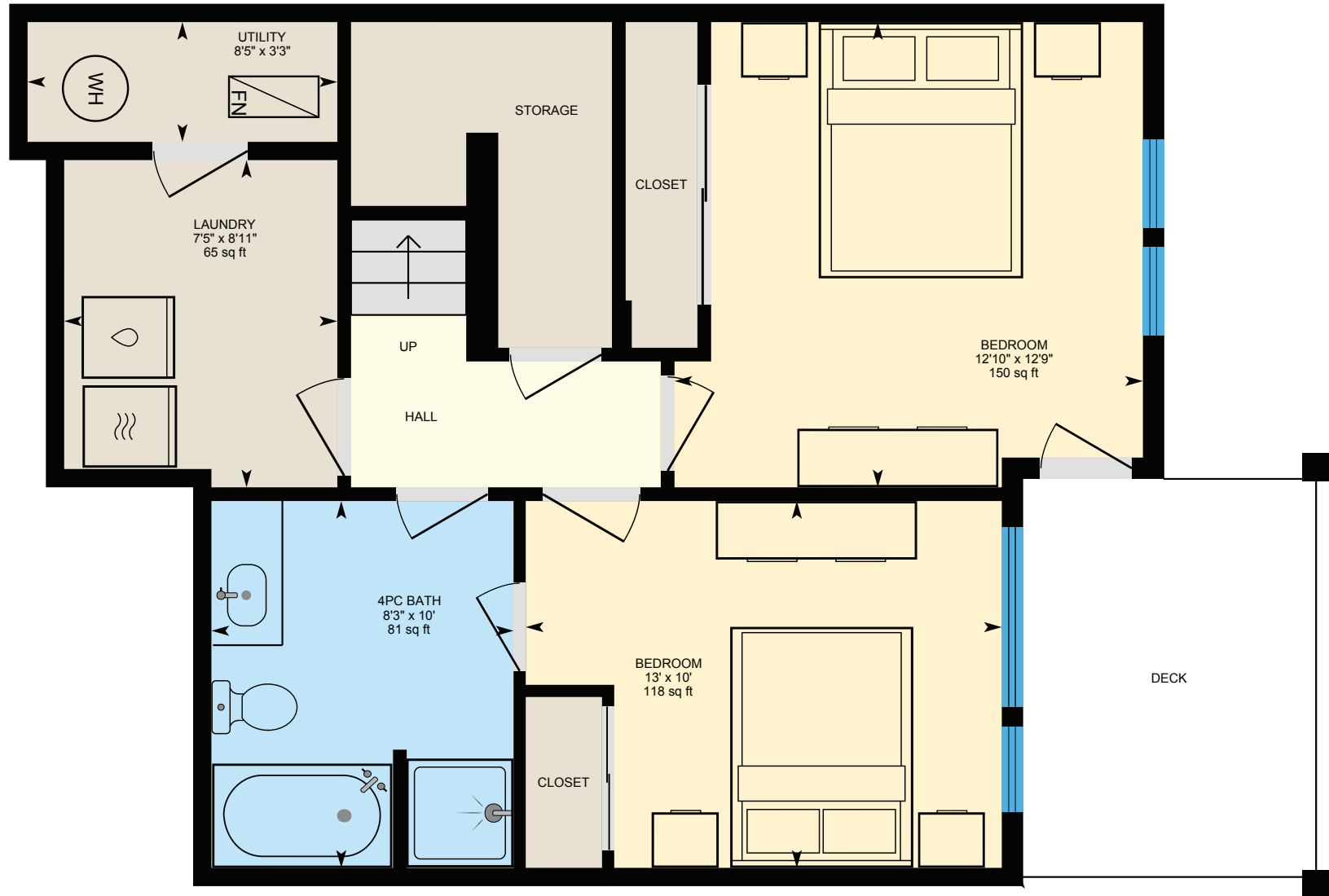


LOST LAKE PARK

Close to Whistler's warmest lake with dock and dog park.

3 FOREST CREEK

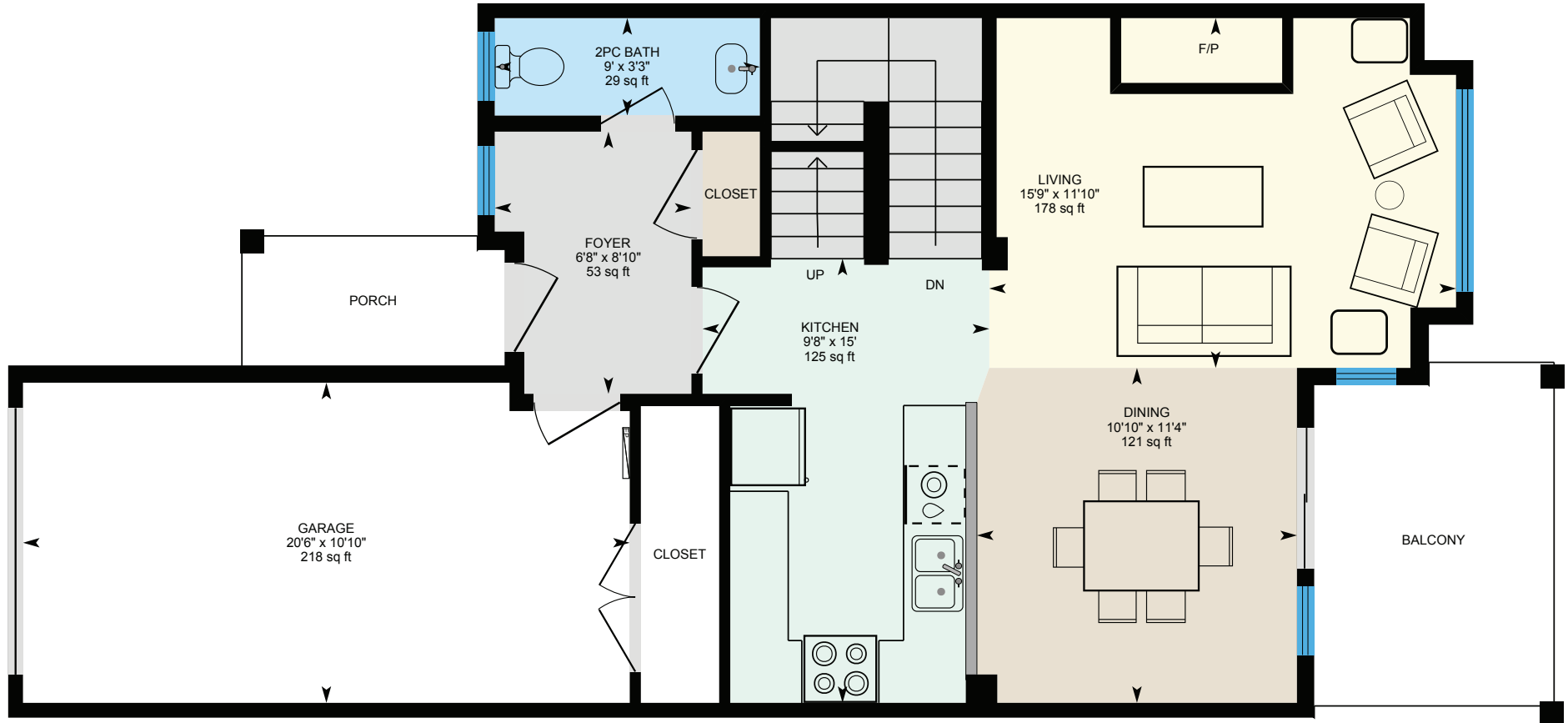
LOWER FLOOR



MEASUREMENT ARE APPROXIMATE, ACTUALS MAY VARY. MEASUREMENTS MAY INCLUDE NON-CONFORMING SPACE.

3 FOREST CREEK

MAIN FLOOR



MEASUREMENT ARE APPROXIMATE, ACTUALS MAY VARY. MEASUREMENTS MAY INCLUDE NON-CONFORMING SPACE.

3 FOREST CREEK

UPPER FLOOR



MEASUREMENT ARE APPROXIMATE, ACTUALS MAY VARY. MEASUREMENTS MAY INCLUDE NON-CONFORMING SPACE.