

6464 ST ANDREWS WAY



**SOUGHT-AFTER
NEIGHBOURHOOD**

5
BEDROOMS

4,014 SQ.FT.
RESIDENCE

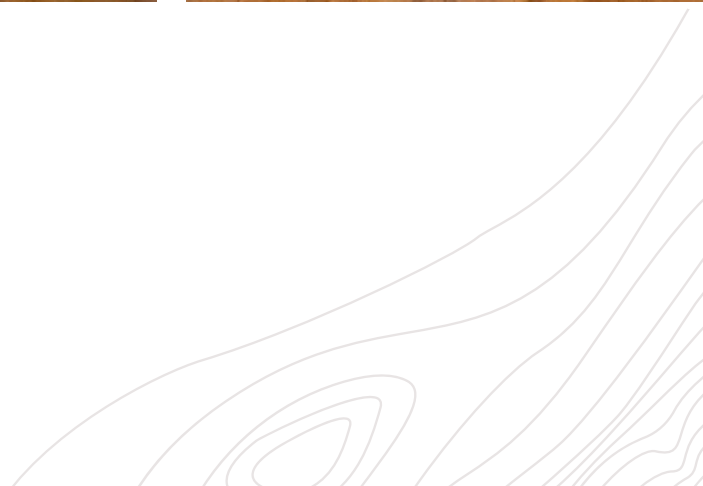
3.5
BATHROOMS

7,682 SQ.FT.
LOT

EXPERIENCE AN ELEVATED WHISTLER LIFESTYLE



A warm palette of timber & natural accents come together in this luxury West Coast inspired residence, nestled in the popular Whistler Cay Heights neighbourhood. Built with the utmost attention to detail, this custom-built chalet was designed to ensure you experience an elevated Whistler lifestyle, all within walking distance to Whistler Village along the Valley Trail located just steps away. At the heart of the home, the vaulted main living area offers a gas fireplace for cozy evenings, while the large, covered balcony allows you to seamlessly include your outdoor space as part of the entertaining area. A private fenced yard with barrel sauna, a separate media/family room, & double car garage, plus a separate one-bed suite, means there is space for everyone in this mountain residence!



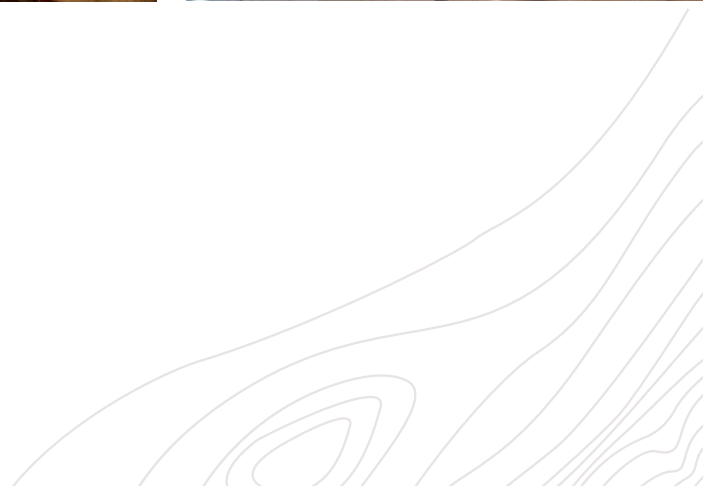


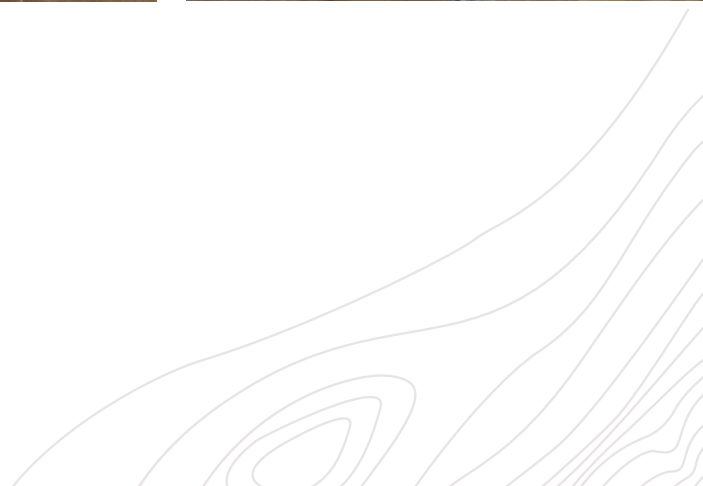
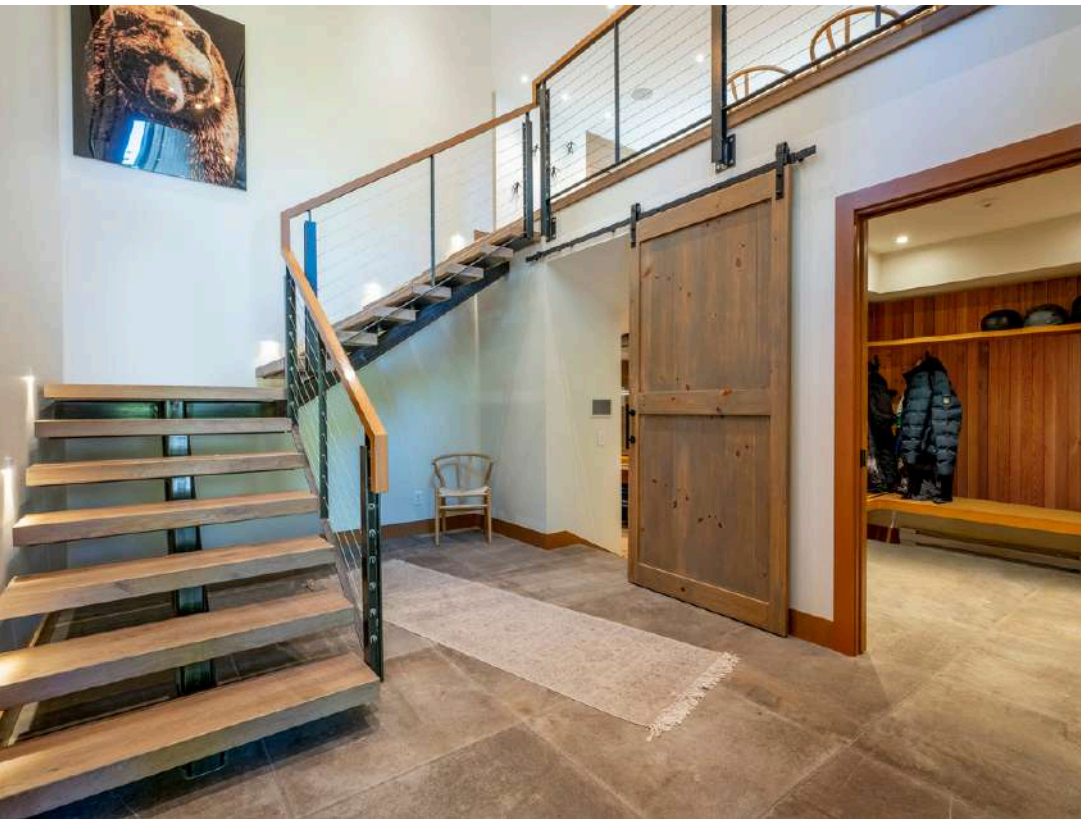
PRIVATE FENCED YARD WITH SAUNA AND SPA.

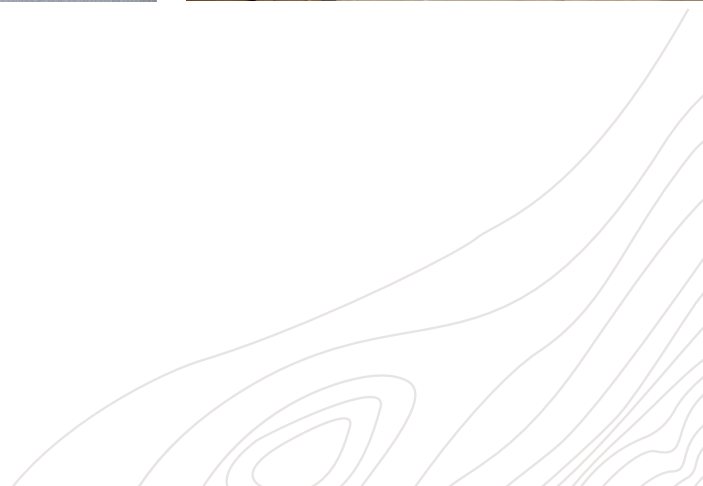
VAULTED MAIN LIVING AREA,
PERFECT FOR ENTERTAINING

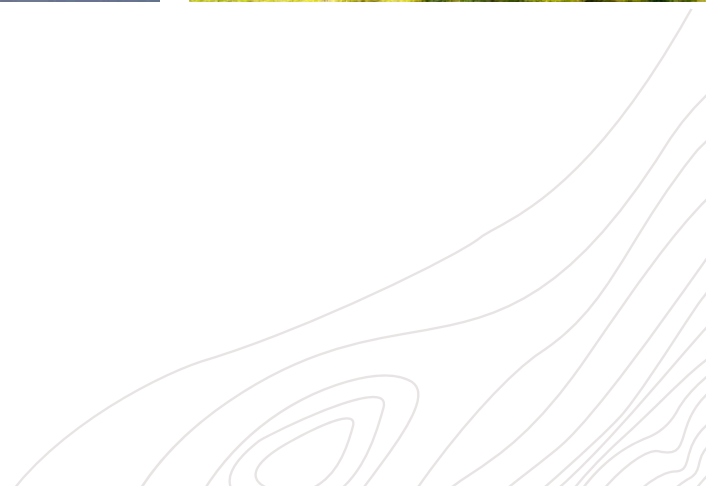


LARGE OUTDOOR BALCONY WITH
FIREPLACE

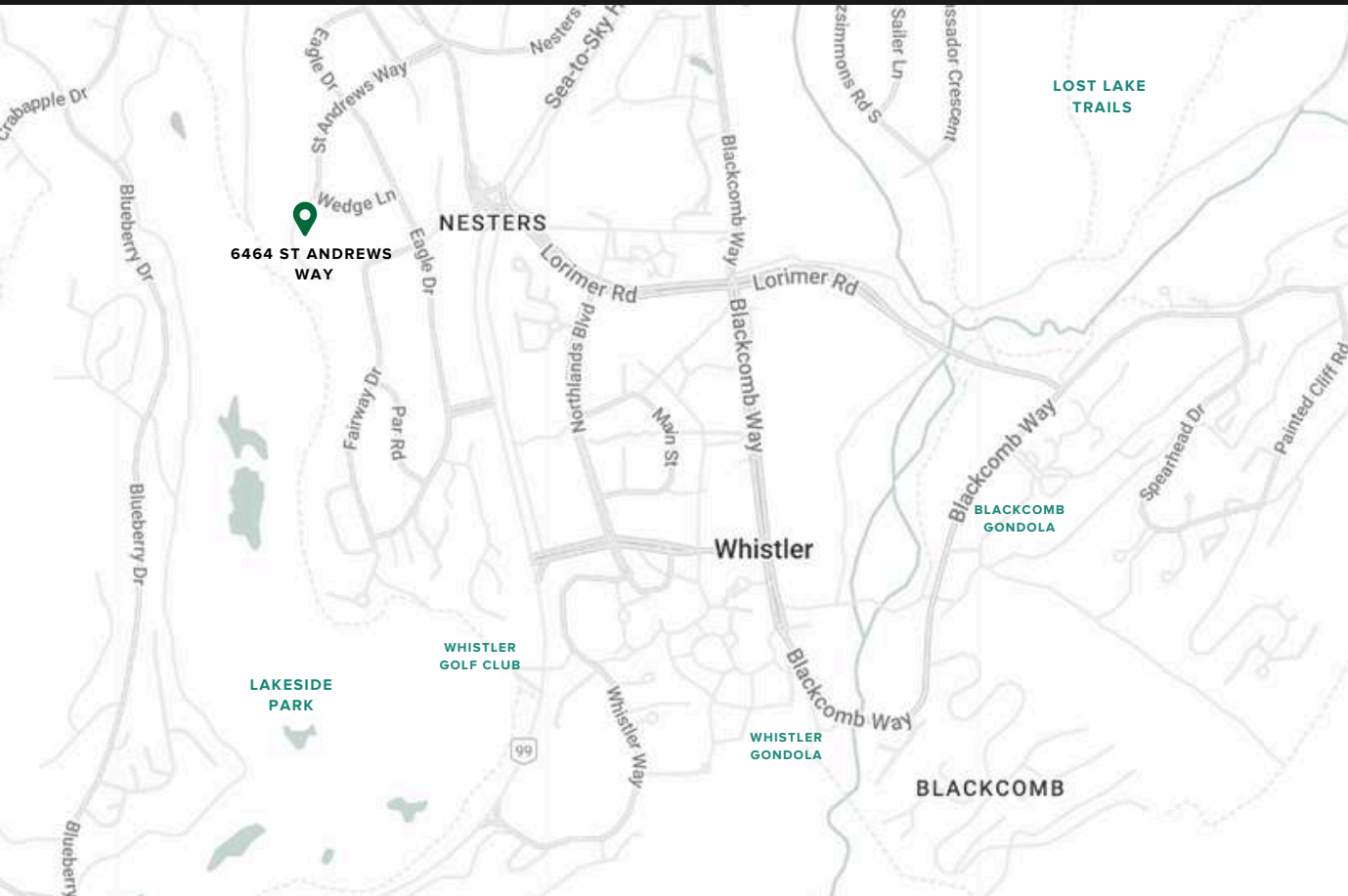








ACCESS TO ALL



POPULAR NEIGHBOURHOOD

Located in the popular Whistler Cay Heights neighbourhood with schools & parks nearby.



BIKING TRAILS

Quick and convenient access to a multitude of Whistler's best trail network including Valley Trail.



CENTRAL LOCATION

Located within walking distance to shops, restaurants, amenities and gym in Whistler Village.

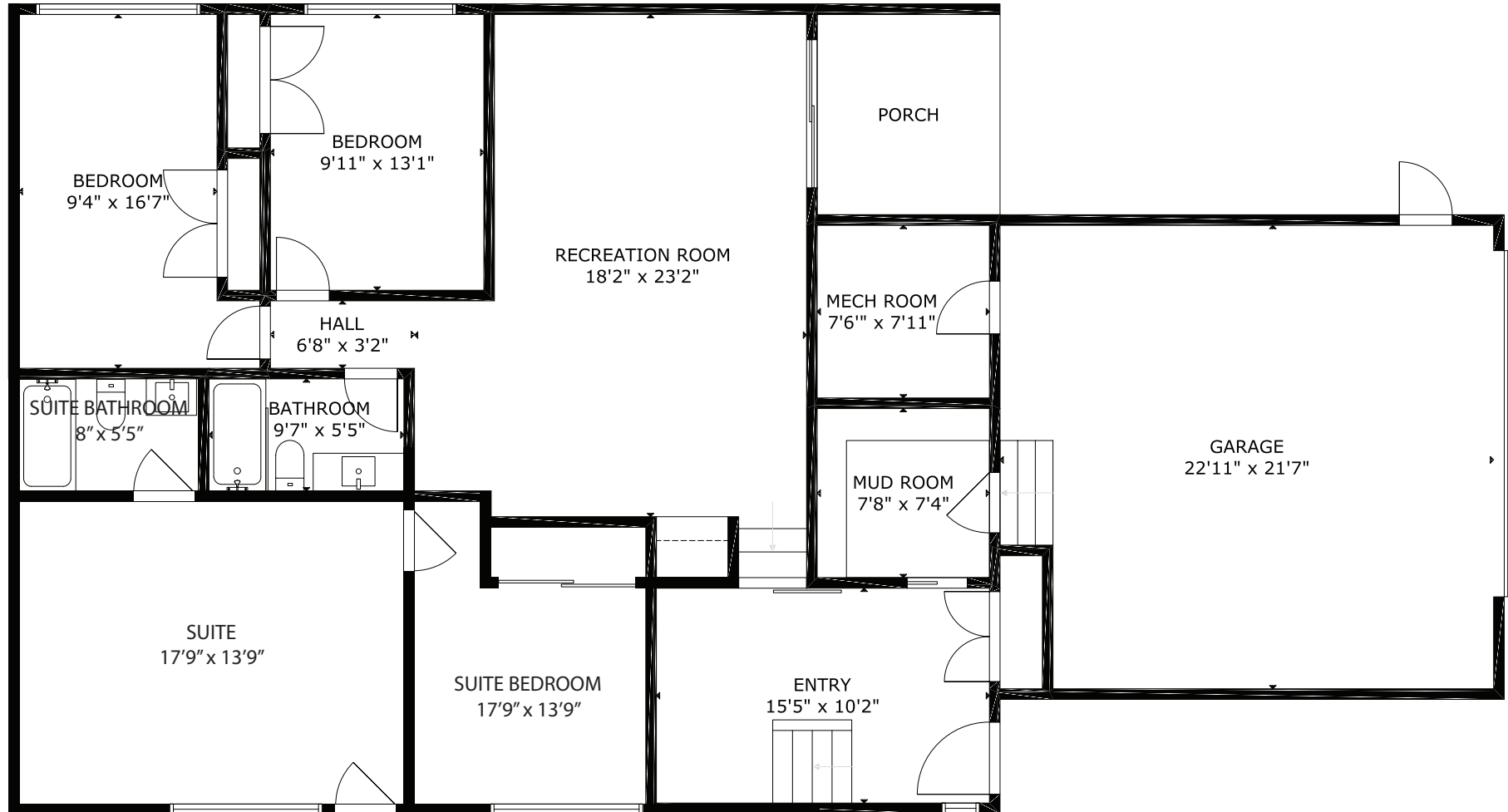


WHISTLER GOLF CLUB

Located within walking distance to Whistler Golf Club and Driving Range.

6464 ST ANDREWS WAY

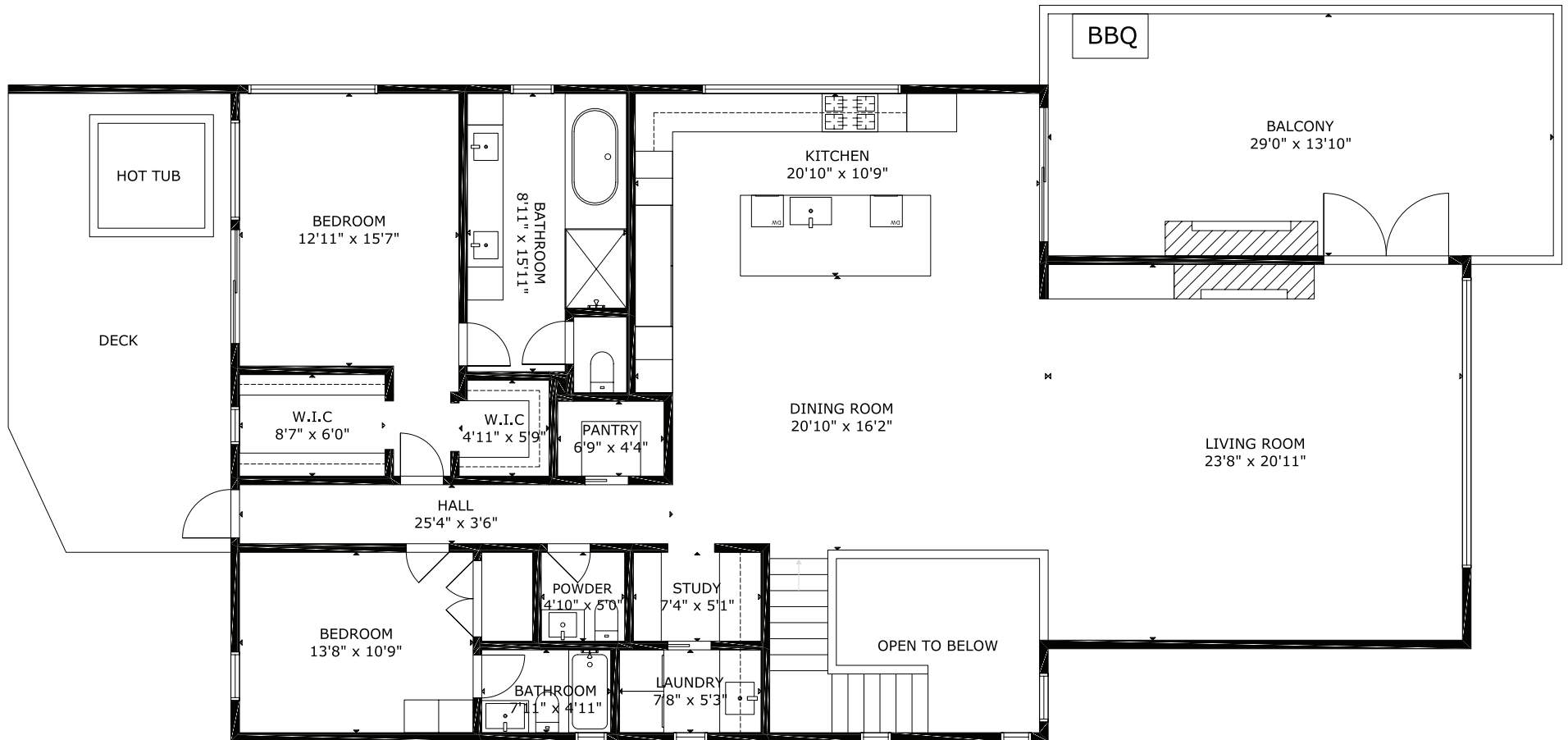
LOWER FLOOR



MEASUREMENT ARE APPROXIMATE, ACTUALS MAY VARY. MEASUREMENTS MAY INCLUDE NON-CONFORMING SPACE.

6464 ST ANDREWS WAY

UPPER FLOOR



MEASUREMENT ARE APPROXIMATE, ACTUALS MAY VARY. MEASUREMENTS MAY INCLUDE NON-CONFORMING SPACE.